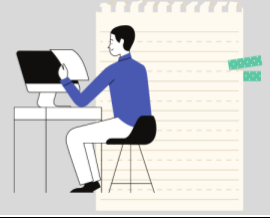


PUBLISHING IN THE ASAHPERD JOURNAL



Mission

ASAHPERD's Mission is to promote and support healthy lifestyles of Alabama citizens through high-quality programs in health, physical education, recreation, dance, sport, and exercise science by:

- providing opportunities for professional growth and development,
- communicating the importance and value of our profession,
- encouraging and facilitating research findings to the profession and to the public,
- developing and evaluating standards and guidelines within the profession,
- and advocating for quality instruction by working with policymakers across the state.

About The ASAHPERD Journal

The ASAHPERD Journal is the official journal of ASAHPERD. It provides information on a variety of health, physical education, recreation, dance, sport, and exercise science problems. Recent issues of *The ASAHPERD Journal* have included articles on teaching strategies, fitness, teacher education, adapted physical activity, the use of technology, mental health, and health disparities.

Aim & Scope

The ASAHPERD Journal is looking for articles that communicate theory, research, and practice in an ASAHPERD (health, physical education, recreation, or dance) discipline. Acceptable topics include but are not limited to teaching techniques; research; Alabama state resources and services; meeting Alabama state or national standards; philosophy; advocacy and policy appropriate for Alabama; and reviews of web resources, books, and audiovisuals.

Publication Information

The ASAHPERD Journal is published two times per year, and has an acceptance rate that hovers around 50%

Contact

Claire Mowling

Editor

asahperd.journal@gmail.com

The ASAHPERD Journal Author Guidelines

The ASAHPERD Journal is published twice a year and is a refereed journal. The current schedule for publication is Spring (April) and Fall (November).

- ⇒ Manuscripts submitted to *The ASAPERD Journal* must not be submitted to other publications simultaneously.
- ⇒ To ensure the topic is suitable for *The ASAPERD Journal*, authors may submit an email inquiry (asahperd.journal@gmail.com) before preparing the manuscript.
- ⇒ Original data-based research and practical implications manuscripts are accepted.
- ⇒ Manuscript acceptance is based on originality of material and significance to the profession.
- ⇒ Include a cover letter with your credentials (student or faculty and your university affiliation or place of employment) and stating the article is not being considered for publication elsewhere.
 - Pre-professional undergraduate and graduate student submissions must be accompanied by a letter on official University letterhead from a faculty sponsor (even if NOT listed as a co-author) that they have reviewed the paper and vouch that it is in a condition worthy to be submitted to a peer-reviewed journal.
 - We are requesting faculty sign and provide their contact information for an undergraduate or graduate student to ensure that the work is of high quality and was produced as part of a guided experience.

Manuscript Preparation

The ASAPERD Journal acceptance of articles for publication is ongoing. Manuscripts must meet the following guidelines:

- ⇒ Submit electronically as a word document (docx.) in portrait configuration to asahperd.journal@gmail.com
- ⇒ Use current APA Guidelines.
- ⇒ Include an abstract of 50 words or less.
- ⇒ Do not exceed 3000 words. (*Note: A higher word count may be considered. Check with the editor before submission.*)
- ⇒ Double-space the entire manuscript.
- ⇒ Use Times New Roman or Arial, 12-point font.
- ⇒ Headers should be centered, and sub headers left justified.
- ⇒ Do not insert any extra blank spaces or special formatting.
- ⇒ Insert continuous line numbers on the left side of the entire manuscript.
- ⇒ All manuscripts must be properly blinded by the author before being sent out for review.

Other Areas

Ideas and Tips Corner. *The ASAPERD Journal* accepts short articles about one specific practical area of interest in physical education, health, recreation, sport, exercise science, or dance. Articles should contain a brief introduction, followed by practical information, and steps to success that can immediately be implemented in the appropriate environment. The ASAPERD editorial team encourages members who value the sharing of knowledge to promote positive

change in our field to submit a short article for the ideas and tips corner. Submissions should not exceed 1000 words.

Ask the Expert. The *ASAHPERD Journal* features a short interview, question and answer style article highlighting one area of interest to the readership. The expert should seek to provide the reader with background and practical information that can be applied. The ASAHPERD editorial team encourages expert to reach out to the journal to be considered for an 'Ask the Expert' segment in future journals. Alternatively, individuals may nominate an expert in the field.

Manuscript Submission

The ASAHPERD Journal receives all manuscript submissions at asahperd.journal@gmail.com

Manuscript Content

Use simple, straightforward writing. Clear, concise, and logical are best. Focus the manuscript, capture readers' interest, and stimulate their thinking. Avoid overly scientific or educational jargon and passive voice, vary sentence structure, and keep paragraphs short. Avoid using first-person voice and use third person. The ASAHPERD Editorial Board encourages authors to have colleagues review manuscripts before submission.

Abstracts. Include an abstract of 50 words or less. The abstract for accepted articles will appear on *The ASAHPERD Journal* webpage after the article has been published for ease of locating the full article.

References. Double check all references. The authors are responsible for accuracy. References from academic sources are preferred over web references. For reference style, follow the *Publication Manual of the American Psychological Association (7th ed.)*.

Illustrations. Submit tables, charts, drawings, and graphs embedded in the manuscript. Separate files may be requested for accepted articles as needed.

Photographs. The *ASAHPERD Journal* encourages authors to submit sharp, well-composed color photographs to illustrate articles as appropriate. Embed photographs in the manuscript. Separate files will be requested from accepted articles.

The Review Process

- ⇒ The editor reviews all manuscripts for appropriateness of topic and conformance to *The ASAHPERD Journal* writing style. If the topic and style are deemed appropriate, manuscripts are sent to at least two reviewers with expertise in the topic area.
- ⇒ Allow from 4 to 8 weeks for the review process.

Publication

- ⇒ Manuscripts are published in the earliest appropriate and available issue following acceptance. Manuscripts can be accessed via www.asahperd.org under the current journal. Authors will receive a PDF copy of the manuscript via email.
- ⇒ All authors of accepted manuscripts must sign a copyright release form. Authors transfer all copyright ownership of manuscripts to ASAPERD.

Penalty for Plagiarism

Detection of plagiarized material will result in the following actions: (1) the author will receive a formal reprimand from *The ASAPERD Journal*; (2) a copy of the reprimand will be sent to the author's institution or place of employment; and (3) the author will be prohibited from submitting articles to *The ASAPERD Journal* for one year following the infraction.

